

# Mistral FRee

CONTENT  
**EvoHide® Vinyl**  
 BACKING  
**100% Recycled Polyester**  
 WIDTH  
**137 cm**  
 WEIGHT  
**675 g/m²**  
 THICKNESS  
**1.1 mm**  
 WARRANTY  
**5 years**

ADHESION (NEWTON/25.4mm)  
**≥13**  
 COLD CRACK  
**-32°C**  
 ABRASION (MARTINDALE)  
**200,000 cycles**  
 COLOUR FASTNESS TO LIGHT (UV INDEX)  
**≥7**  
 CARE AND CLEANING  
**Easily cleanable with water & soap.**  
 For detailed instructions visit [www.morberneurope.com](http://www.morberneurope.com)

FEATURES  
**Alcohol Resistant**  
 (ISOPROPYL 70%, WITH RINSE)  
**Mildew Resistant**  
**Antimicrobial**

FLAME RETARDANCY  
**EN 1021 (Part 1 & 2)**

**BS 5852 Source 0, 1**  
 (Cigarette & Match)

**CAL TB 117-2013 (Section E)**

Mistral FRee

GREEN INDEX

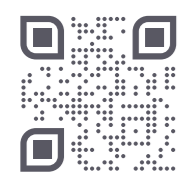
100% vegan	reach compliant	RoHS compliant	no phthalates no POPs	no PFAs	no bromine	no PBTs	no bisphenol
no ozone depleting chemicals	biobased ingredients	100% recycled backing	flame retardant free	low VOC	skin safe (ISO 10993-10)	safety for toys (EN71-3)	

END USE

<b>Marine</b>							
	boats	personal watercrafts					
<b>Contract</b>							
	hospitality	office	public spaces	restaurants	retail	theatres	stadiums
<b>Transportation</b>							
	leisure vehicles	motorcycles	golf carts	snowmobiles			
<b>Healthcare</b>							
	waiting rooms						

V001  
 For guidance only and may be subject to change.  
 See full Product Information Sheet for details and tolerances.

ORDER YOUR SAMPLES HERE:



AVAILABLE FROM STOCK IN EUROPE



DEVELOPED AND MADE IN CANADA.

**A new generation of sustainable coated fabrics**

Named after the strong Mediterranean wind that heralds change and purifies the air, Mistral FRee is our first, groundbreaking EvoHide® range, crafted with over 80% sustainable and highly bio-sourced content. This vegan coated fabric features a 100% recycled polyester backing, repurposing 12 post-consumer PET bottles per metre, thereby actively contributing to waste reduction. Thanks to its organic, natural texture and a fresh palette of colours with remarkable depth, Mistral FRee brings sophistication and sustainability to both indoor and outdoor spaces.





# Mistral FRee



Burlap  
MIS-106



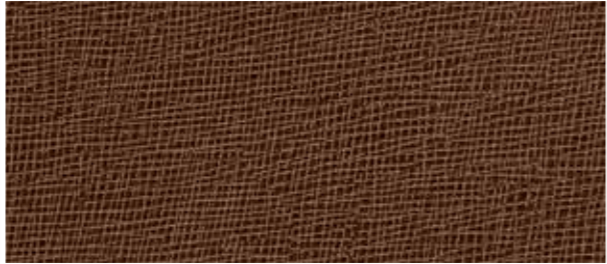
Ivory  
MIS-113



Harvest  
MIS-111



Kelp  
MIS-114



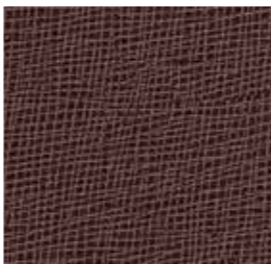
Walden  
MIS-125



Ice  
MIS-112



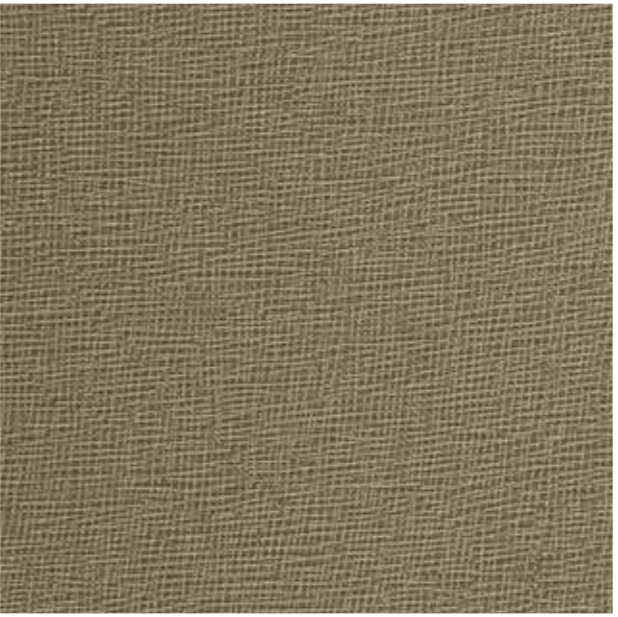
Cactus  
MIS-107



Roseate  
MIS-119



Sun Rays  
MIS-123



Abalone  
MIS-101



Brook  
MIS-105



Olive  
MIS-116



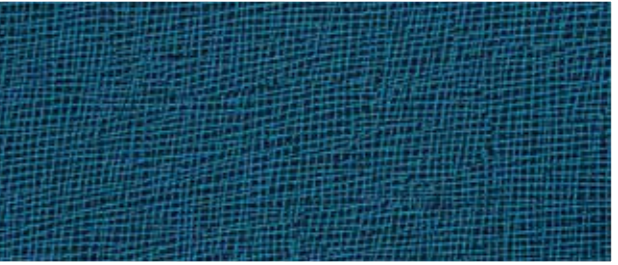
Cherry  
MIS-108



Salamander  
MIS-120



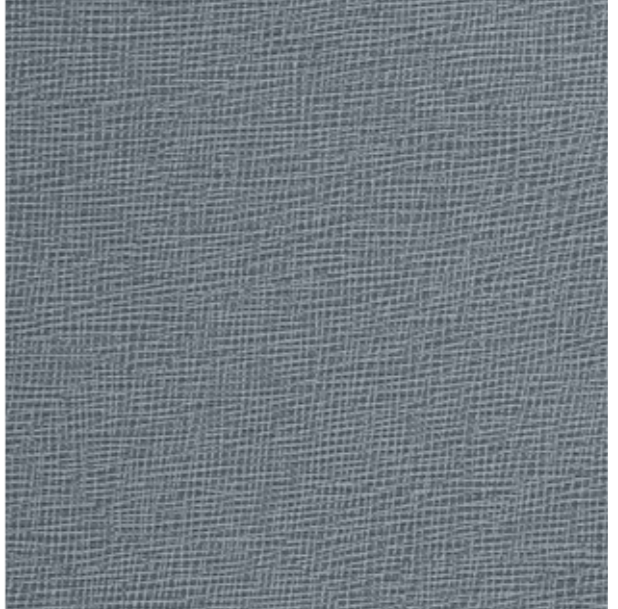
Spice  
MIS-122



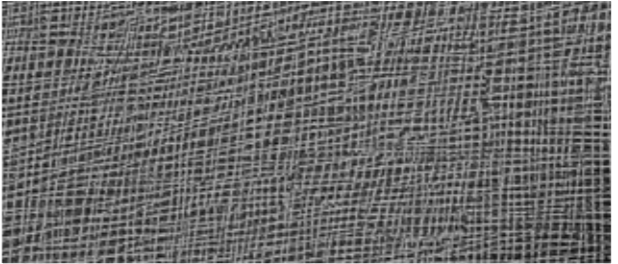
Kingfisher  
MIS-115



Blue Bird  
MIS-104



Dove  
MIS-109



Snowbound  
MIS-121



Azure  
MIS-103



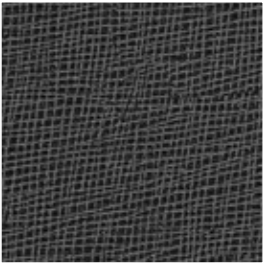
Anemone  
MIS-102



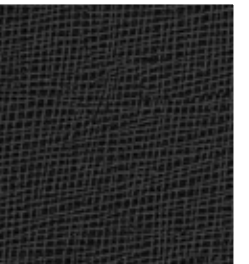
Violet  
MIS-124



Pelican white  
MIS-117



Grizzly Grey  
MIS-110



Raven  
MIS-118

