

Shock & Wave



Shock & Wave

CONTENT
Vinyl
BACKING
Polyester
WIDTH
137 cm
WEIGHT
695 g/m²
THICKNESS
1 mm
WARRANTY
5 years

ADHESION (NEWTON/25.4mm)
≥13
COLD CRACK
-32°C
ABRASION (MARTINDALE)
100,000 cycles
COLOUR FASTNESS TO LIGHT (UV INDEX)
≥7
CARE AND CLEANING
Easily cleanable with water & soap.
For detailed instructions visit www.morberneurope.com

FEATURES
Bleach Resistant
(9:1 RATIO, WITH RINSE)
Alcohol Resistant
(ISOPROPYL 70%, WITH RINSE)
Mildew Resistant
Antimicrobial

FLAME RETARDANCY
IMO MSC 88/26/ADD. 2 PART 8 (3.1 & 3.2)
BS 5852 Source 0, 1 (Cigarette & Match)

EN 1021 (Part 1 & 2)
CAL TB 117-2013 (Section E)

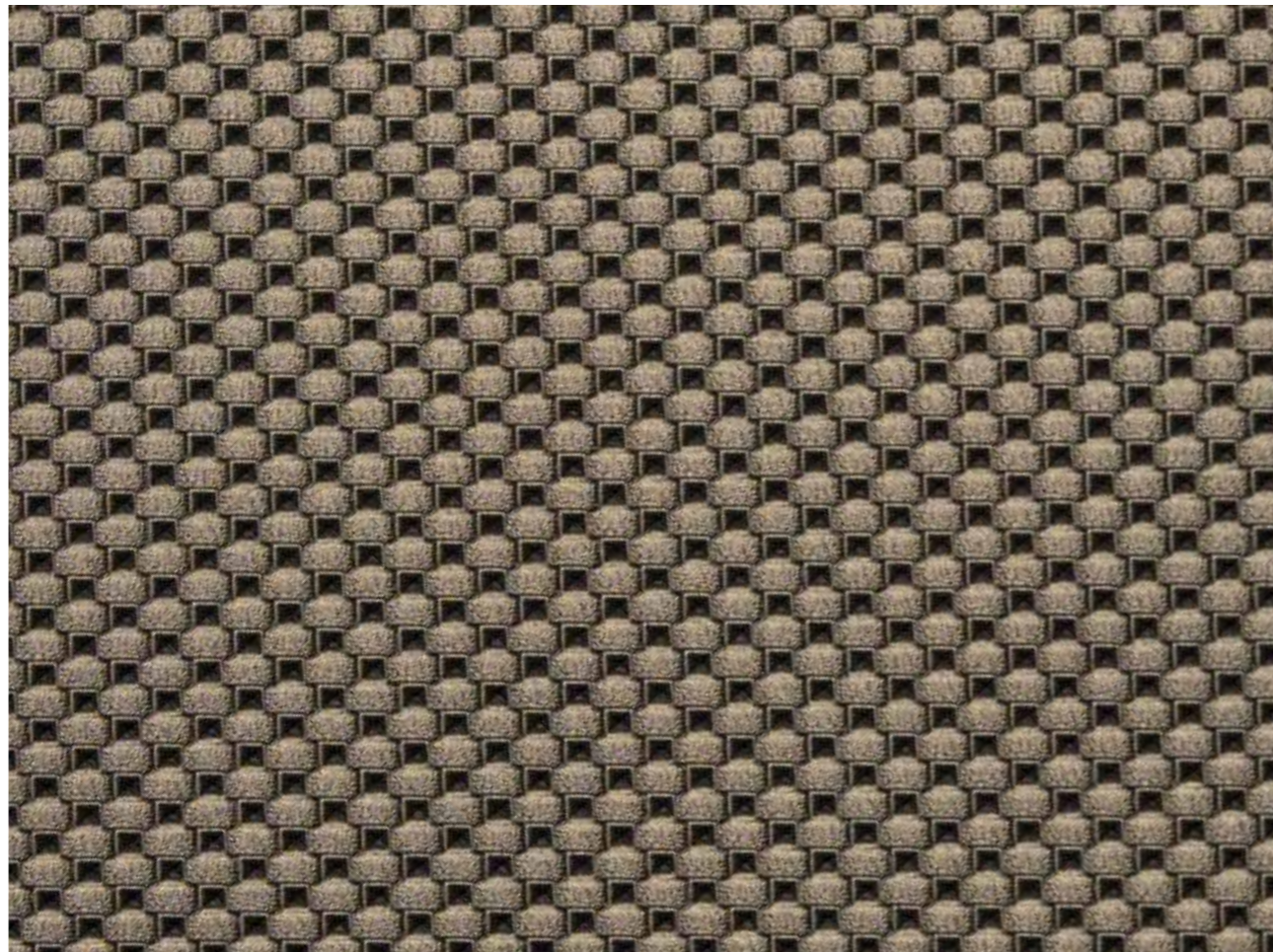
ISO 3795 (FMVSS 302)
R118 Annex 6, 7, 8

GREEN INDEX

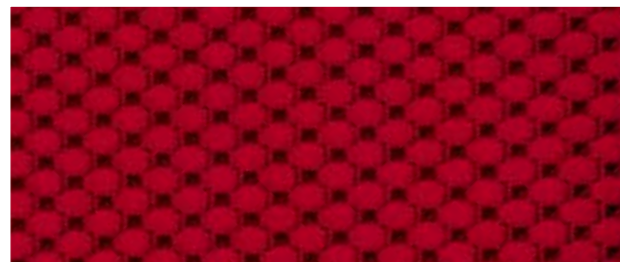
100% vegan	reach compliant	RoHS compliant	no phthalates	no PFAs no POPs
no bromine	no PBTs	no bisphenol	no ozone depleting chemicals	biobased ingredients

END USE

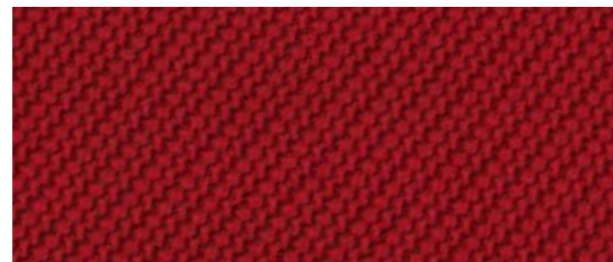
Marine	boats	personal watercrafts						
Contract	hospitality	office	public spaces	restaurants	retail	theatres	stadiums	cruise ships
Transportation	bus & coach	automotive aftermarket	leisure vehicles	motorcycles	golf carts	snowmobiles	trucking	
Healthcare	waiting rooms							



Pewter Mist
WV-210



Acid Sun
WV-204



Hot Rod
SH-102

Shock & Wave

Bold, high-impact coated fabrics

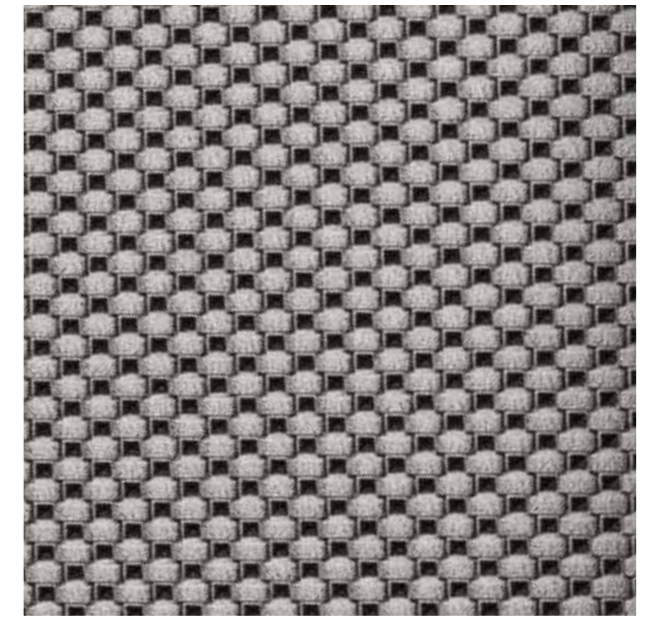
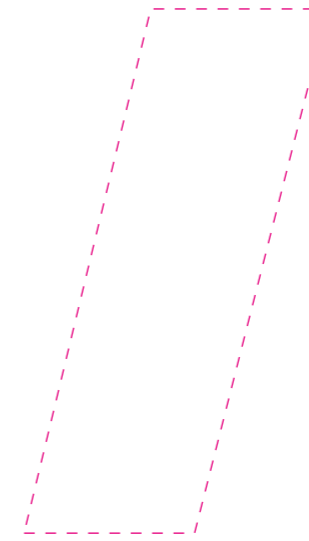
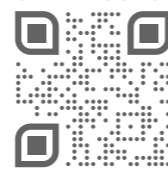
Energise your designs with Shock & Wave: high impact, fashion-forward coated fabrics. Shock's carbon-look, geometric grain and subtle sheen provides versatility and bold appeal. Wave's striking texture and unique motif will turn any indoor or outdoor surface into a statement piece. Bring energy and style to your outdoor spaces with these innovative, eye-catching fabrics.

AVAILABLE FROM STOCK IN EUROPE



DEVELOPED AND MADE IN CANADA.

ORDER YOUR SAMPLES HERE:



Liquid Silver
WV-206



Bronze Mist
WV-207



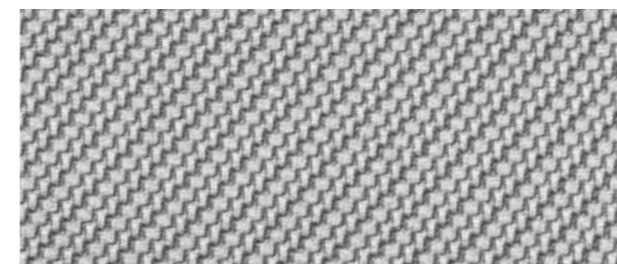
Nickel
WV-208



Horse Power
SH-103



Freestyle
WV-205



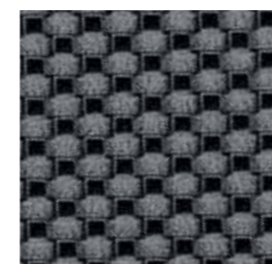
Thunder
SH-104



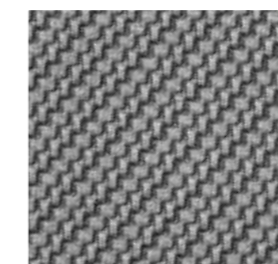
Supersonic
SH-100



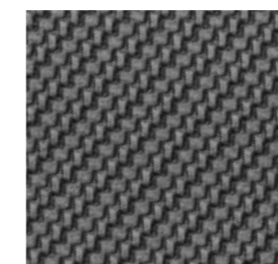
White Cap
WV-209



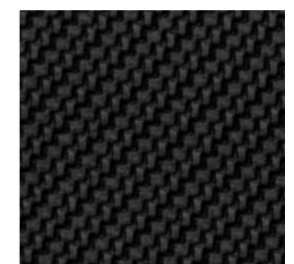
Rocket
WV-211



Storm
SH-105



Carbon
SH-106



Jet
SH-107